



# MANIFOLDS

|                                       |            |
|---------------------------------------|------------|
| <b>Standard Manifold Blocks .....</b> | <b>136</b> |
|---------------------------------------|------------|

The product information and specifications within this catalogue should be viewed as a guide only and are subject to change without notice. Please refer to inside front cover for further details.



## STANDARD MANIFOLD BLOCKS



### Cetop3 - Parallel & Series

**H**  
Hydraulic  
Manifold

**M**  
**C**  
Cetop3

**P**  
P=Parallel  
S=Series

**\***  
No. of stations

**\***  
M=Alloy  
H=Steel

**\***  
S=Sun relief cavity T10-A  
C=Common relief cavity C10-2  
Omit if relief not required

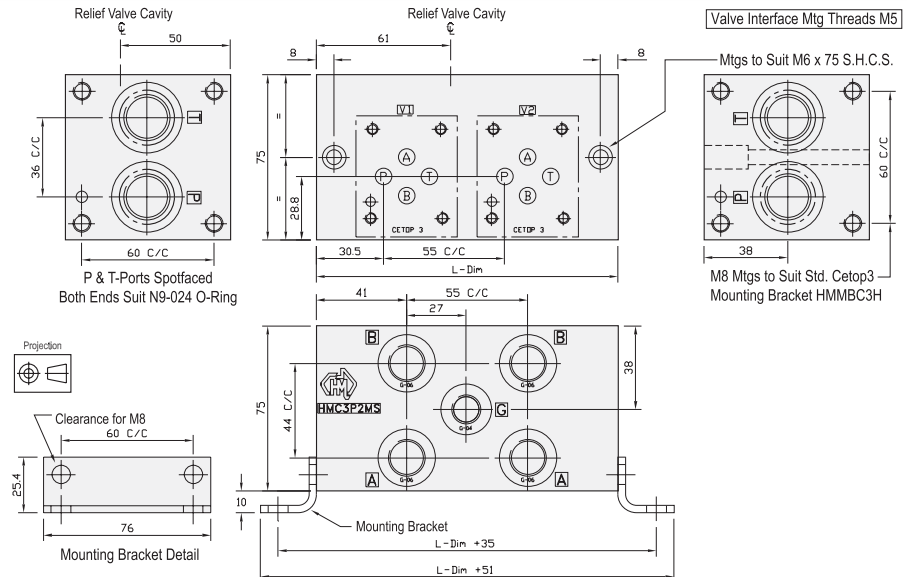
#### SPECIFICATIONS:

- Materials: 6061-T6 (Alloy), S1214 (Steel)
- Max. working pressure: 210 bar (Alloy), 350 bar (Steel)
- Surface treatment: Nil (Alloy), Zinc Silver Passivation (Steel)
- Port sizes: 1/2" BSPP (P&T), 3/8" BSPP (A&B), 1/4" BSPP (G)

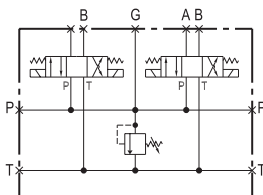
#### INCLUDED COMPONENTS:

- Mounting brackets: 2 each HMMBC3H
- Hex. head set screws: 8 each M8 x 16
- Socket head cap screws: 4 each M6 x 75 (inc. 2 x M6 nuts)
- Flat washers: 4 each M8
- O-Rings (for module Mtg): 2 each N9-024

#### TECHNICAL DETAILS:

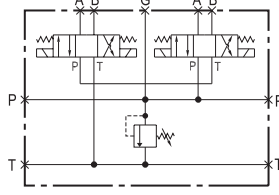


#### Parallel



Manifold Circuit  
(Shown With Relief Option)

#### Series

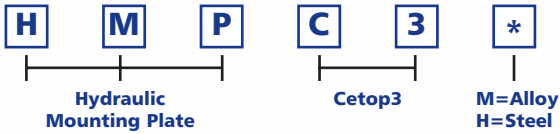


Manifold Circuit  
(Shown With Relief Option)

| Part Number | L Dim | Steel Nominal Mass Kg | Alloy Nominal Mass Kg |
|-------------|-------|-----------------------|-----------------------|
| HMC3*1**    | 90    | 3.8                   | 1.6                   |
| HMC3*2**    | 137   | 4.8                   | 2.2                   |
| HMC3*3**    | 192   | 6.5                   | 2.9                   |
| HMC3*4**    | 247   | 8.3                   | 3.7                   |
| HMC3*5**    | 302   | 10.2                  | 4.5                   |
| HMC3*6**    | 357   | 12.0                  | 5.3                   |
| HMC3*7**    | 412   | 13.8                  | 6.0                   |
| HMC3*8**    | 467   | 15.5                  | 6.8                   |



## Cetop3 - Mounting Plate



### SPECIFICATIONS:

- Materials: 6061-T6 (Alloy), S1214 (Steel)
- Max. working pressure: 210 bar (Alloy), 350 bar (Steel)
- Surface treatment: Nil (Alloy), Zinc Silver Passivation (Steel)
- Port sizes: 1/2" BSPP (P&T)

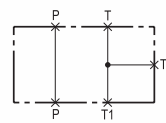
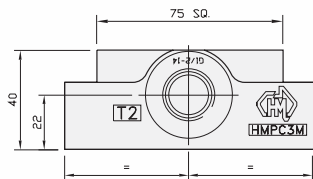
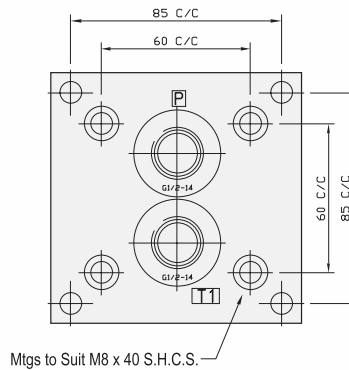
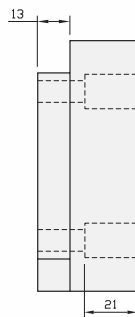
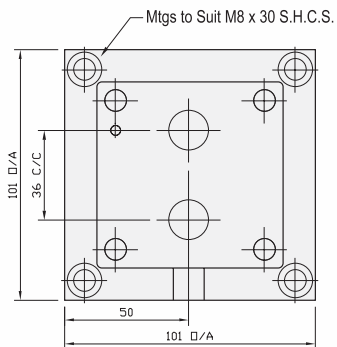
### INCLUDED COMPONENTS:

- Socket head cap screws: 4 each M8 x 40 S.H.C.S., 4 each M8 x 30 S.H.C.S.

### TECHNICAL DETAILS:



PROVIDES BASE FOR VERTICAL MTG OF H.M.A. CETOP3 MANIFOLDS

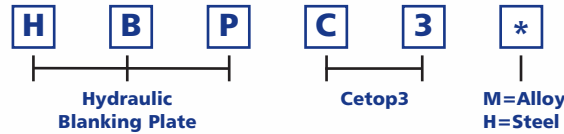


Manifold Circuit





### Cetop3 - Blanking Plate



#### SPECIFICATIONS:

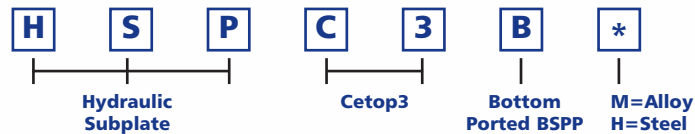
- Materials: 6061-T6 (Alloy)  
S1214 (Steel)
- Max. working pressure: 210 bar (Alloy)  
350 bar (Steel)
- Surface treatment: Nil (Alloy)  
Zinc Silver Passivation (Steel)

#### INCLUDED COMPONENTS:

- Socket head cap screws: 4 each M6 x 30
- O-Rings: 4 each N9-012



### Cetop3 - Subplate - Bottom Ported - BSPP



#### SPECIFICATIONS:

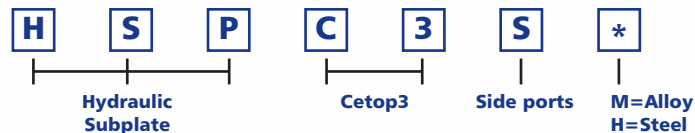
- Materials: 6061-T6 (Alloy)  
S1214 (Steel)
- Max. working pressure: 210 bar (Alloy)  
350 bar (Steel)
- Surface treatment: Nil (Alloy)  
Zinc Silver Passivation (Steel)
- Port sizes: 3/8" BSPP (P&T)  
3/8" BSPP (A&B)

#### INCLUDED COMPONENTS:

- Socket head cap screws: 2 each M6 x 45 (inc. 2 x M6 Nuts)
- Flat washers: 2 each M6



### Cetop3 - Subplate - Side Ports



#### SPECIFICATIONS:

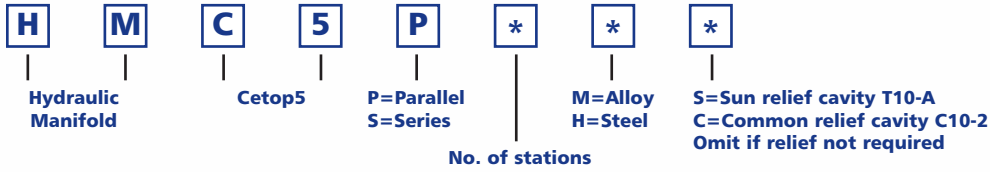
- Materials: 6061-T6 (Alloy)  
S1214 (Steel)
- Max. working pressure: 210 bar (Alloy)  
350 bar (Steel)
- Surface treatment: Nil (Alloy)  
Zinc Silver Passivation (Steel)
- Port sizes: 3/8" BSPP (P&T)  
3/8" BSPP (A&B)

#### INCLUDED COMPONENTS:

- Socket head cap screws: 2 each M6 x 45 (inc. 2 x M6 Nuts)
- Flat washers: 2 each M6



## Cetop5 - Parallel & Series



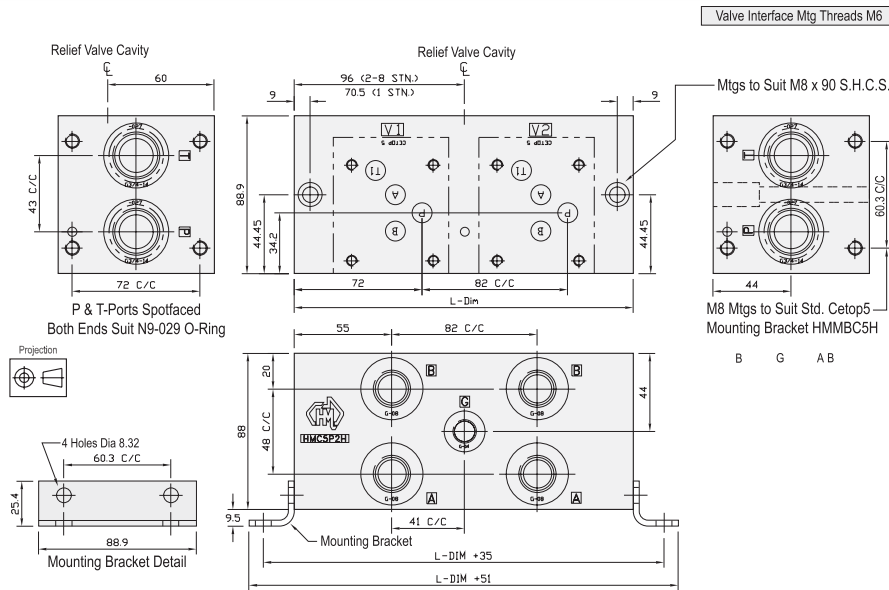
### SPECIFICATIONS:

- Materials: 6061-T6 (Alloy), S1214 (Steel)
- Max. working pressure: 210 bar (Alloy), 350 bar (Steel)
- Surface treatment: Nil (Alloy), Zinc Silver Passivation (Steel)
- Port sizes: 3/4" BSPP (P&T), 1/2" BSPP (A&B), 1/4" BSPP (G)

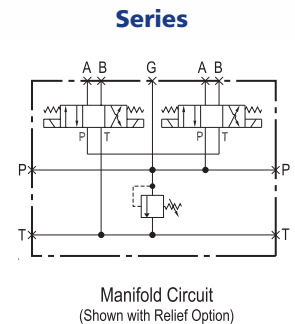
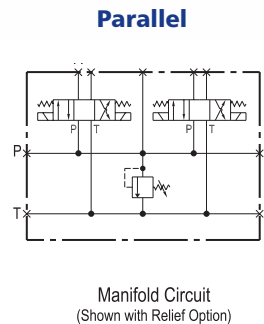
### INCLUDED COMPONENTS:

- Mounting brackets: 2 each HMMBC5H
- Hex. head set screws: 8 each M8 x 16
- Socket head cap screws: 4 each M8 x 90 (inc. 2 x M8 nuts)
- Flat washers: 4 each M8
- O-Rings (for module Mtg): 2 each N9-029

### TECHNICAL DETAILS:

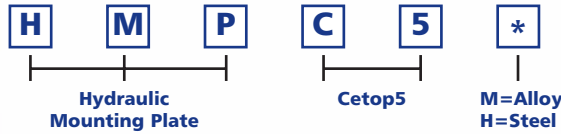


| Part Number | L Dim | Steel Nominal Mass Kg | Alloy Nominal Mass Kg |
|-------------|-------|-----------------------|-----------------------|
| HMC5*1**    | 108   | 6.0                   | 2.5                   |
| HMC5*2**    | 191   | 10.3                  | 3.5                   |
| HMC5*3**    | 273   | 14.5                  | 5.0                   |
| HMC5*4**    | 355   | 19.5                  | 6.5                   |
| HMC5*5**    | 437   | 25.6                  | 8.0                   |
| HMC5*6**    | 519   | 27.5                  | 9.5                   |
| HMC5*7**    | 601   | 32.1                  | 11.0                  |
| HMC5*8**    | 683   | 37.5                  | 12.5                  |





## Cetop5 - Mounting Plate



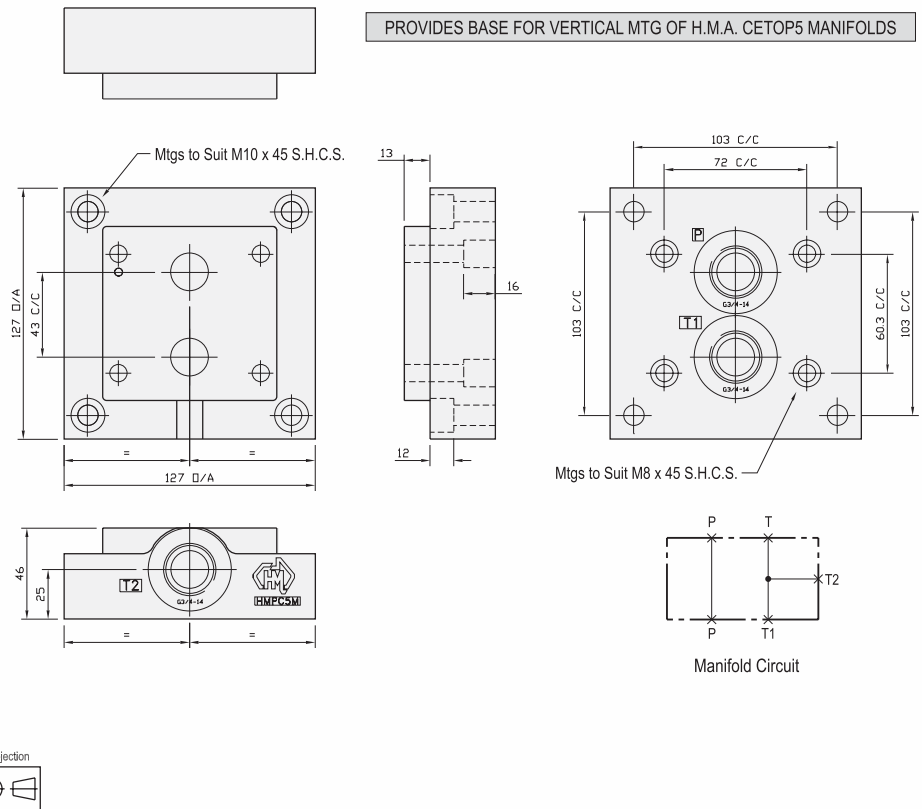
### SPECIFICATIONS:

- Materials: 6061-T6 (Alloy)  
S1214 (Steel)
- Max. working pressure: 210 bar (Alloy)  
350 bar (Steel)
- Surface treatment: Nil (Alloy)  
Zinc Silver Passivation (Steel)
- Port sizes: 3/4" BSPP (P&T)

### INCLUDED COMPONENTS:

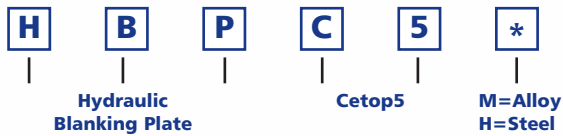
- Socket head cap screws: 4 each M10 x 45 (inc. 4 x M10 nuts & washers)  
4 each M8 x 45

### TECHNICAL DETAILS:





## Cetop5 - Blanking Plate



### SPECIFICATIONS:

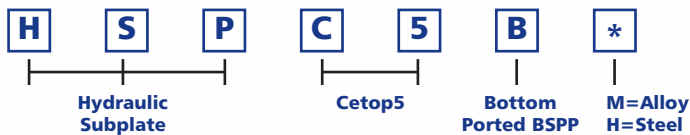
- Materials: 6061-T6 (Alloy)  
S1214 (Steel)
- Max. working pressure: 210 bar (Alloy)  
350 bar (Steel)
- Surface treatment: Nil (Alloy)  
Zinc Silver Passivation (Steel)

### INCLUDED COMPONENTS:

- Socket head cap screws: 4 each M6 x 30
- O-Rings: 5 x N9-014



## Cetop5 - Subplate - Bottom Ported - BSPP



### SPECIFICATIONS:

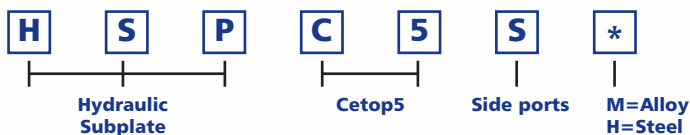
- Materials: 6061-T6 (Alloy)  
S1214 (Steel)
- Max. working pressure: 210 bar (Alloy)  
350 bar (Steel)
- Surface treatment: Nil (Alloy)  
Zinc Silver Passivation (Steel)
- Port sizes: 1/2" BSPP (P&T)  
1/2" BSPP (A&B)

### INCLUDED COMPONENTS:

- Socket head cap screws: 2 each M8 x 35 (inc. 2 x M8 Nuts)
- Flat washers: 2 each M8



## Cetop5 - Subplate - Side Ports



### SPECIFICATIONS:

- Materials: 6061-T6 (Alloy)  
S1214 (Steel)
- Max. working pressure: 210 bar (Alloy)  
350 bar (Steel)
- Surface treatment: Nil (Alloy)  
Zinc Silver Passivation (Steel)
- Port sizes: 1/2" BSPP (P&T)  
1/2" BSPP (A&B)

### INCLUDED COMPONENTS:

- Socket head cap screws: 2 each M8 x 35 (inc. 2 x M8 Nuts)
- Flat washers: 2 each M8

