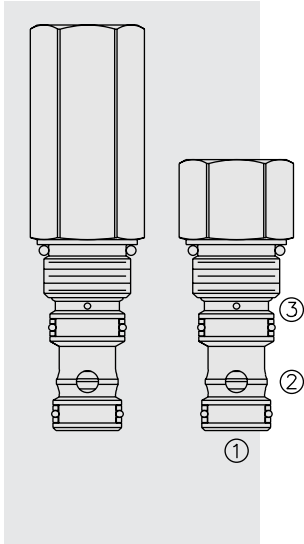


## EV10-S34 Vented Spool-Type Logic Element



### DESCRIPTION

A spool-type, screw-in, cartridge-style, hydraulic directional element, with multi-function potential when used with other directional, pressure, or flow control devices.

### OPERATION

The **EV10-S34** is a spring-biased blocking valve which will shift to allow full flow from ① to ② only when ③ is vented to create a pressure drop across the internal orifice which exceeds the pressure value of the selected bias spring force.

EV10-S34 is a vent-to-open directional valve.

### FEATURES

- Multiple function/application potential.
- Smooth shift transition.
- Low pressure drop.
- Industry common cavity.

### RATINGS

**Operating Pressure:** 345 bar (5000 psi) cartridge; 240 bar (3500 psi) standard aluminum housing

**Flow:** See Performance Chart

**Internal Leakage:** 164 cc/minute (10 cu. in./minute) max. at 207 bar (3000 psi)

**Bias Spring Pressure Options:**

- 0.7 bar (10 psi);
- 2.8 bar (40 psi);
- 5.5 bar (80 psi);
- 7.6 bar (110 psi);
- 11.0 bar (160 psi);

Note: Tall cap option required for 11.0 bar (160 psi) spring.

**Temperature:** -40 to 120°C with standard Buna seals

**Filtration:** See page 9.010.1

**Fluids:** Mineral-based or synthetics with lubricating properties at viscosities of 7.4 to 420 cSt (50 to 2000 sus); See Temperature and Oil Viscosity, page 9.060.1

**Installation:** No restrictions; See page 9.020.1

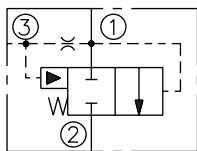
**Cavity:** VC10-S3; See page 9.110.1

**Cavity Tool:** CT10-S3xx; See page 8.600.1

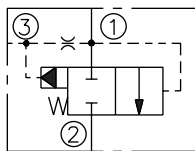
**Seal Kit:** SK10-S3x-MM; See page 8.650.1

### SYMBOLS

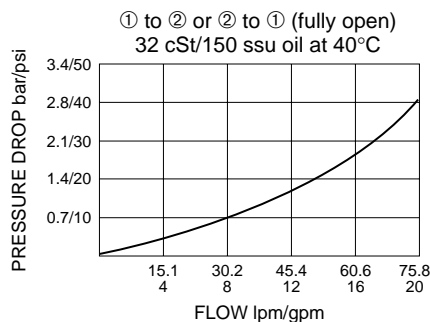
**USASI:**



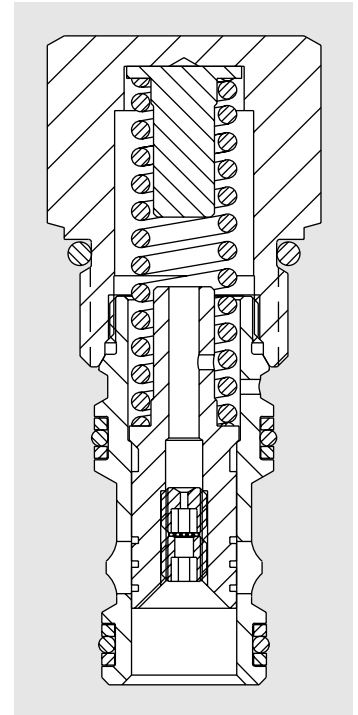
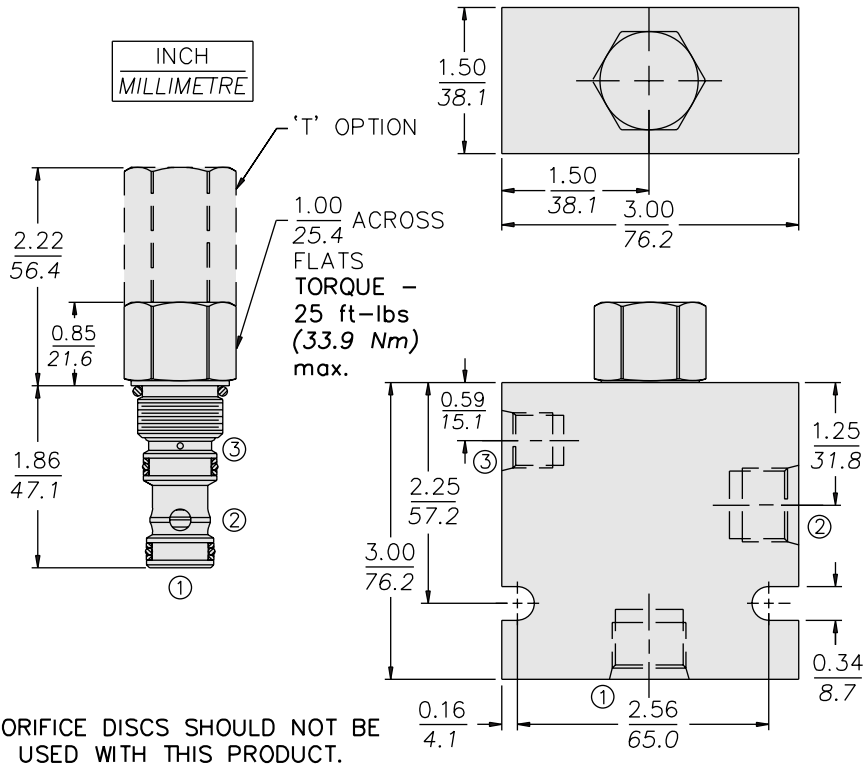
**ISO:**



### PERFORMANCE (Cartridge Only)



**DIMENSIONS**



**MATERIALS**

**Cartridge:** Weight: 0.15 kg. (0.32 lbs.)  
Steel with hardened work surfaces.  
Zinc-plated exposed surfaces.  
Buna N O-rings and polyester  
elastomer back-ups standard.

**Standard Ported Body:** Weight:  
0.32 kg. (0.70 lbs.) Anodized high-  
strength 6061 T6 aluminum alloy,  
rated to 207 bar (3000 psi). Ductile  
iron bodies available; dimensions  
may differ. See page 8.010.1

**TO ORDER**

