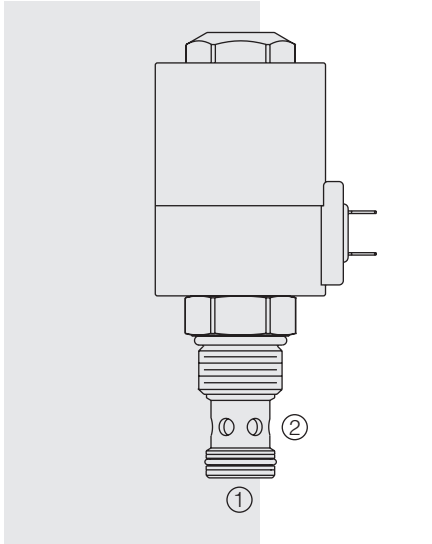


SV12-25 Spool, 2-Way, Normally Open



DESCRIPTION

A solenoid-operated, two-way, normally open, direct-acting spool-type, screw-in hydraulic cartridge valve, designed to function as a bidirectional blocking valve.

OPERATION

When de-energized, the **SV12-25** allows flow in both directions. When energized, the valve's spool shifts to block flow in both directions.

FEATURES

- Continuous-duty rated solenoid.
- Hardened spool and cage for long life.
- Optional coil voltages and terminations.
- All ports may be fully pressurized.
- Heavy-duty water-resistant E-Coils rated up to IP69K.

RATINGS

Operating Pressure: 240 bar (3500 psi) max.

Flow: See Performance Chart

Leakage: 410 cc/minute (25 cu. in./minute) in the 2 to 1 direction,
574 cc/minute (35 cu. in./minute) in the 1 to 2 direction, at 240 bar (3500 psi)

Temperature: -40 to 100 °C (-40 to 212 °F) with Buna N seals

Coil Duty Rating: See Chart

Response Time: Pull-In: 100 msec; Drop-Out: 100 msec

Initial Coil Current Draw at 20 °C: 2.8 amps at 12 Vdc

Filtration: See page 9.010.1

Fluids: Mineral-based or synthetics with lubricating properties at viscosities of 7.4 to 420 cSt (50 to 2000 sus); See Temperature and Oil Viscosity, page 9.060.1

Installation: No restrictions; See page 9.020.1

Cavity: VC12-2; See page 9.112.1

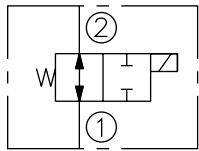
Cavity Tool: CT12-2XX; See page 8.600.1

Seal Kit: SK12-2X-M; See page 8.650.1

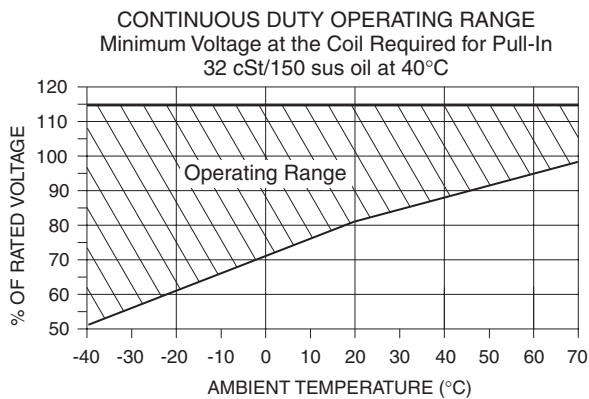
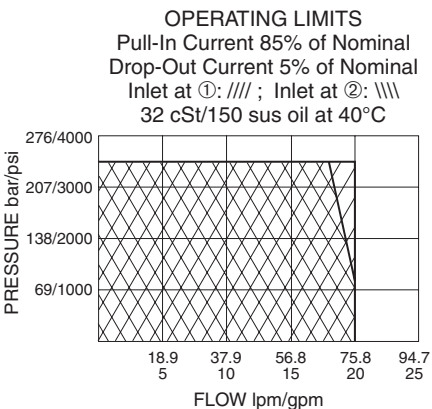
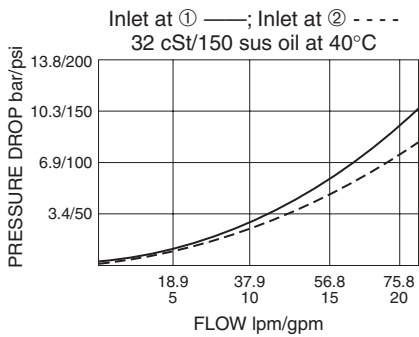
E-Coil Nut: Part No. 7085180

SYMBOLS

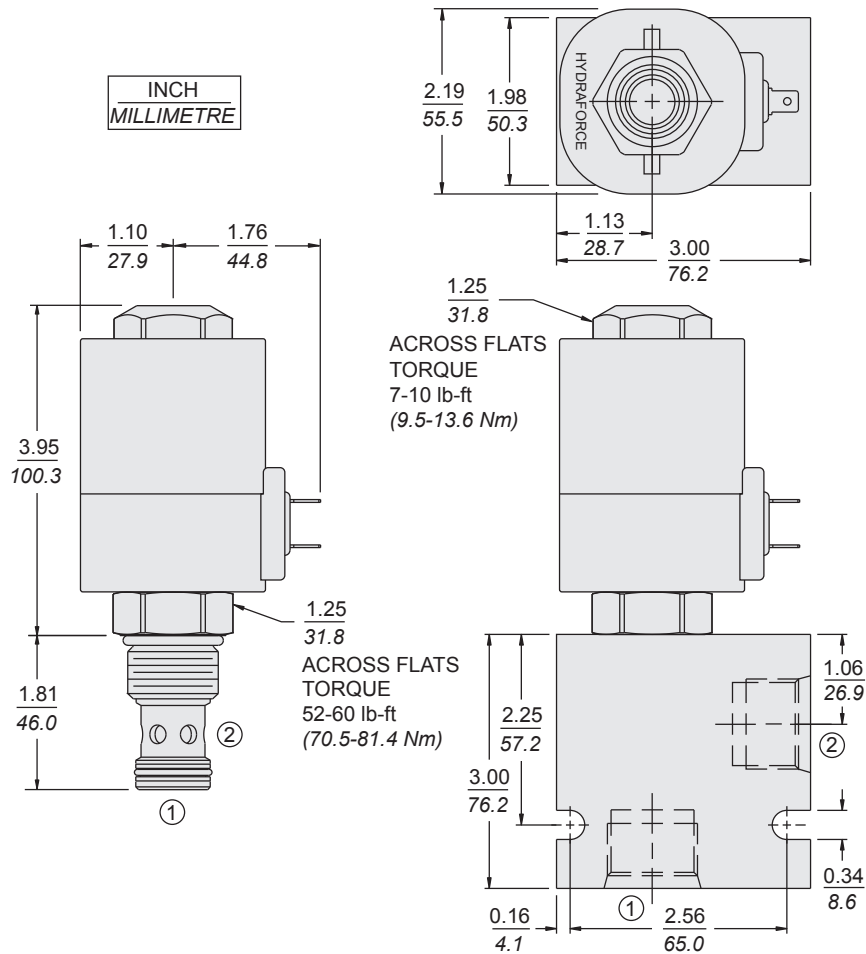
USAS/ISO:



PERFORMANCE (Cartridge Only)



DIMENSIONS



MATERIALS

Cartridge: Weight: 0.25 kg (0.55 lb)
Steel with hardened work surfaces.
Zinc-plated exposed surfaces. Buna N
O-rings and TFE back-ups standard.

Standard Ported Body: Weight: 0.57 kg
(1.25 lb) Anodized high-strength 6061
T6 aluminum alloy, rated to 207 bar
(3000 psi). Ductile iron bodies avail-
able; dimensions may differ.
See page 8.012.1.

E-Coil: Weight: 1.36 kg (3.0 lb) Fully en-
capsulated with rugged external metal
shell. Rated up to IP69K with integral
connectors.
See page 3.400.1.

TO ORDER

SV12-25

Porting
Cartridge Only 0
SAE 12 12T

Seals
Buna N (Std.) N
Fluorocarbon V

Voltage
0 Less Coil
12 12 Vdc
24 24 Vdc

Terminations (VDC)

- EL Leadwires (2), IP65 Rated
- ES Dual Spades, IP65 Rated
- EG DIN 43650, IP65 Rated
- EW Leads w/Weather-Pack® Connector, IP65 Rated
- EY Metri-Pack® 150 Connector, IP69K Rated
- ER Deutsch DT04-2P Connector, IP69K Rated

For EY or ER Coil with Zener Diode, add "Z" to option code.
For example: "EY/Z"
See coil info. on page 3.400.1

Other coil voltages may be available for OEM applications. Consult factory.