



**BERENDSEN**  
F L U I D P O W E R

**SYDNEY  
BRANCH**



Berendsen Fluid Power is Australia's largest locally owned hydraulic company offering the nation's most comprehensive range of fluid power products, service and repair facilities, and system solutions.

With our nationwide network of sales and service branches, Berendsen is equipped to deliver to customers a prompt and fully integrated fluid power solution - whatever the requirement.

Berendsen Fluid Power's Sydney Branch has extensive experience and ongoing involvement in fluid power applications across a wide range of industries, including mining, construction, manufacturing, transport and waste treatment .

Berendsen's Sydney team of experienced Field and Workshop Technicians, Sales and Application

Engineers, Project Managers and Internal Sales Personnel provides total comprehensive support in all facets of hydraulics. Additionally, Berendsen's Sydney Branch team ensures a high standard of environmental and OH&S compliance is maintained throughout all elements of the branch's operations.



**1 - 4 Denoci Close, Wetherill Park NSW 2164 Ph - (02) 9765 8888 Fax - (02) 9765 8800**



## BERENDSEN SYDNEY'S FACILITIES

Berendsen's Sydney Branch was purpose built in 2004, providing a fully equipped, modern workshop and office, featuring a dedicated workshop floor space of 2000m<sup>2</sup>. The workshop floor has a high-grade epoxy paint finish and is washed and cleaned daily to maintain a high cleanliness environment for precision assembly work. The facilities at Berendsen's Sydney Branch include:



### Component Testing

- Hydraulic Test Centre consisting of four individual test rigs. In addition to testing cylinders and valves the test rigs are capable of testing pumps and motors up to 110kW input capacity.
- The largest test rig is part of an integrated system that is able to test open and closed loop systems under varying speeds from 10 to 2300 rpm and input power of 110kW. The system has an integral 'dynamic braking' motor load testing unit capable of replicating the demands of field applications.

### Stripdown and Assembly

- Class 100 clean room for high level precision stripdown and assembly of pumps, motors and valves.

- Bearing induction heater unit for the safe removal and re-installation of motor/pump bearings up to 300mm diameter.

### Honing Facilities

- Honing machine capable of honing diameters up to 450mm and 7500mm in length.

### Lifting

- Overhead crane servicing workshops, with lifting capabilities up to 5tonne. The crane includes an OH&S compliant load cell weighing system.
- 3 x 500kg pedestal mount, swing gantry cranes.

### Cylinder Stripping and Testing

- Cylinder maintenance cell that provides for stripdown, repair, overhaul and testing service incorporating an elevated floor which captures oil spillage and maintains a clean, safe environment.
- Horizontal cylinder locking/unlocking bench with a torque capacity to 4000Nm.

### Turning Capabilities

- Five manual lathes, with up to 1000mm swing and 5000mm in length.

### General Machining

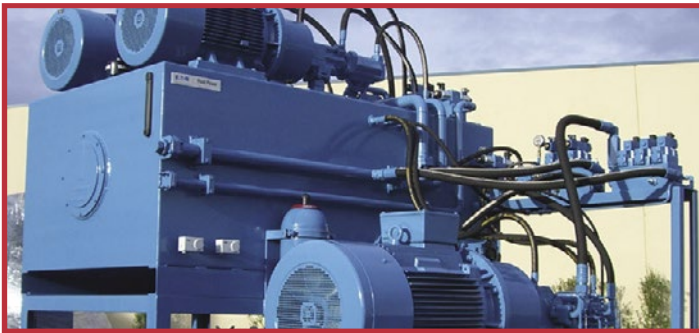
- Bed mill station with 3000mm long bed, 15kW input power and universal rotating head which allows for milling, drilling, tapping and boring functions.
- Radial arm drill 9kW input capacity and drill diameter up to 63mm.

### General Facilities

- Sandblasting and Spray Booth facilities, with 8200l/sec of filtered airflow expelled to ambient via twin exhaust ducts, ensures an appropriate corrosion resistant and aesthetic finish on all serviced components.
- Large and secure hard stand yard.
- Fully enclosed and licensed wash bay facility, capable of accommodating large mobile plant and other equipment.
- In-house oil condition monitoring.

## MANUFACTURE

We are pleased to be able to offer our customers the benefits of our manufacturing facilities, located in Geelong and Newcastle, where we design and manufacture standard and customised products including cylinders, manifolds, hydraulic hoses and power units. With multiple CAD and CAM stations, our engineers are able to efficiently develop and implement practical solutions to meet specific requirements.



Berendsen's dedicated manufacturing facility in Newcastle produces a large range of heavy duty cylinders, including Roundline and Mill Cylinders. These cylinders are the first choice for a well engineered heavy duty hydraulic actuator application.

Our Newcastle Branch is also able to custom design and manufacture special cylinders to meet individual application and dimensional requirements. We are able to manufacture from 25mm to 600mm dia. bore, up to 12000mm in length and stroke sizes up to 8000mm. Types of cylinders include telescopic multiple stage cylinders, spring loaded cylinders, synchronised constant velocity cylinders and linear servo actuators.

Everything Berendsen manufacturers is of the highest quality and made to the appropriate Australian Standards.

## SERVICE AND REPAIRS

The hydraulic service and repair capabilities of Berendsen's Sydney Branch include:

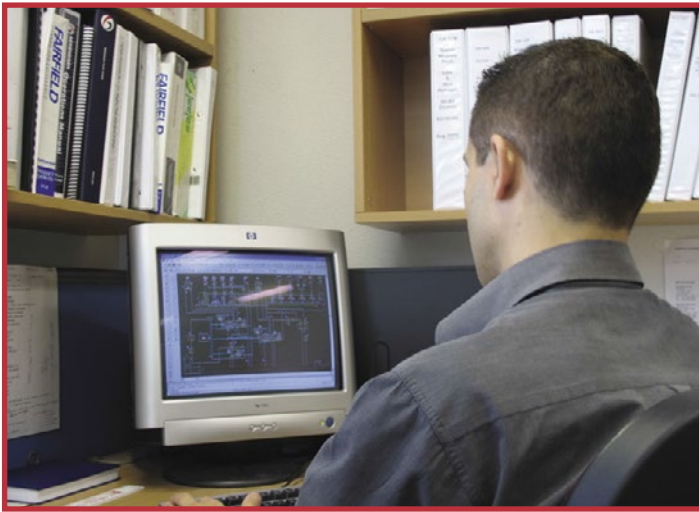


- 24 hour, 7 day a week after hours service support.
- Preventative maintenance programs.
- Extensive stock holding and spare parts support service.
- Experienced and qualified field service technicians with fully equipped service vehicles capable of providing all types of on site repairs and service.
- Repair and overhaul of pumps, motors, cylinders and all types of hydraulic components and systems.





## SYSTEM AND APPLICATION DESIGN



With the support of a dedicated head office based Engineering and Design Group and a national network of Berendsen branches, Berendsen's Sydney Branch is able to provide a complete range of engineering services and specialised assistance in a range of areas including:

- Application engineering and re-engineering for optimum performance.
- Installation and commissioning of complete systems.
- Project management of small to large hydraulic projects.
- Process improvement.
- Reference and resource compilation.
- Quality process maintenance.
- Product research and development.

## DISTRIBUTION

Berendsen's Sydney Branch is a distributor of a large range of leading hydraulic brands including:

 Hydraulic Connectors & Accessories	 Hydrostatic Transmissions, Pumps & Motors	 Pumps, Valves, Motors & Cylinders	 High Torque Motors & Power Steering	 Failsafe Brakes	 Planetary Final Drives & Wheel Drives
 Filters & Hydraulic Accessories	 Cartridge Valves	 Solenoid Cartridge Valves	 Screw In Cartridge Valves	 Monoblock & Modular Directional Valves, Gear Pumps	 Radial Piston Motors
 Hydraulic Gear Products	 Agricultural Cylinders	 Hose & Fittings	 Modular Directional Valves	 Mini AC & DC Power Units	 Specialised Tools & Equipment
 Hydraulic Equipment	 Monoblock & Modular Directional Valves	 Planetary Gearboxes	 Hydraulic Gear Pumps	 Hydraulic Manifolds	 Accumulators & Heat Exchangers

**ADELAIDE - BRISBANE - BUNDABERG - GEELONG - MACKAY - MELBOURNE - NEWCASTLE  
PERTH - SYDNEY - TOOWOOMBA - TOWNSVILLE - WOLLONGONG**