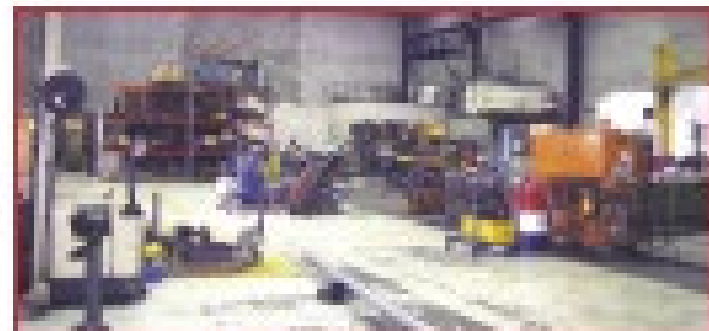
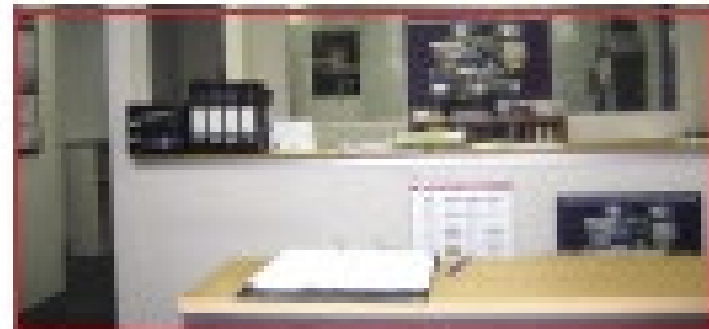




**MANUFACTURING CAPABILITIES**

Berendsen's Sydney Branch was purpose built in 2004, providing a fully equipped, modern workshop and office, featuring a dedicated workshop floor space of 2000m<sup>2</sup>. The workshop floor has a high-grade epoxy paint finish and is sealed and cleaned daily to maintain a high cleanliness environment for precision assembly work. The facilities at Berendsen's Sydney Branch include:



**Component Testing**

- Hydraulic Test Chamber consisting of two individual test rigs. In addition to testing cylinders and valves the test rigs are capable of testing pumps and valves up to 10000psi input capacity.
- The largest test rig is part of an integrated system that is able to test open and closed loop systems under varying speeds from 10 to 2000 rpm and input power of 1000W. The system has an integral "dynamic testing" water load testing unit capable of replicating the demands of field applications.

**Shipping and Assembly**

- Class 100 clean room for high level precision shipping and assembly of pumps, valves and valves.

- Bearing installation benches suit for the safe removal and re-installation of mainframe bearings up to 200mm diameter.

**Honing Facilities**

- Honing machine capable of honing diameters up to 400mm and 7000mm in length.

**Lifting**

- Overhead crane servicing workshops, with lifting capabilities up to 20tons. The crane includes an OHS compliant load cell weighing system.
- 3x 200kg palletised crane, using gasstrycrane.

**Cylinder Shipping and Testing**

- Cylinder maintenance call shed provides for shipping, repair overhaul and testing service incorporating an elevated floor which captures oil spills and maintains a clean, safe environment.
- Horizontal cylinder latching/unlatching bench with a torque capacity to 4000Nm.

**Turning Capabilities**

- Five manual lathes, with up to 1000mm swing and 2000mm in length.

**Grind Machining**

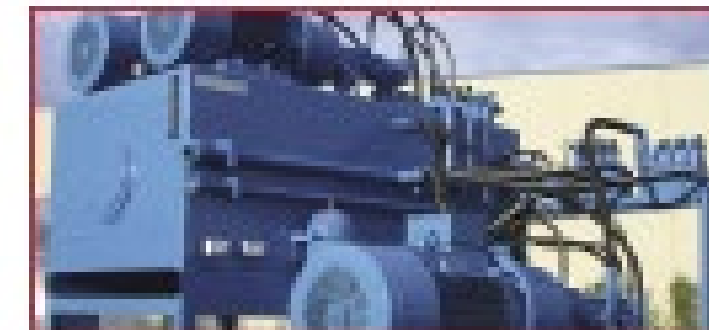
- Bed mill station with 2000mm long bed, 1500W input power and universal rotating head which allows for milling, drilling, tapping and boring functions.
- Bedmill can take 100W input capacity and shaft diameter up to 80mm.

**Grind Facilities**

- Sandblasting and Spray Booth facilities, with 4000litre of filtered air flow supplied to maintain the basic exhaust ducts, ensure an appropriate emission standard and metallic finish on all serviced components.
- Large and secure load shed yard.
- Fully enclosed and licensed waste bay facility capable of accommodating large vehicle plant and office equipment.
- In-house oil condition monitoring.

**MANUFACTURING**

We are pleased to be able to offer our customers the benefits of our manufacturing facilities, located in Gosford and Newcastle, where we design and manufacture standard and customised products including cylinders, manifolds, hydraulic hoses and power units. With multiple CNC and EDM stations, our engineers are able to efficiently design and implement practical solutions to meet specific requirements.



Berendsen's dedicated manufacturing facility in Newcastle produces a large range of heavy duty cylinders, including function and lift cylinders. Many cylinders are finished in accordance with equipment heavy duty hydraulic cylinder application.

Our Newcastle Branch is also able to custom design and manufacture special cylinders to meet individual application and dimensional requirements. We are able to manufacture from 20mm to 400mm dia. bore, up to 12000mm in length and diameter up to 4000mm. Types of cylinders include telescopic, multiple stage cylinders, spring loaded cylinders, specialised constant velocity cylinders and linear ram cylinders.

Everything Berendsen manufactures is of the highest quality and made to the appropriate Australian Standards.

**REPAIR AND SERVICE**

The hydraulic service and repair capabilities of Berendsen's Sydney Branch include:



- 24 hour, 7 days week after hours service support.
- Proactive maintenance programs.
- Delamination/leak testing and spare parts support service.
- Experienced and qualified field service technicians with fully equipped service vehicles capable of providing all types of on site repairs and service.
- Repair and overhaul of pumps, valves, cylinders and all types of hydraulic components and systems.

